

Cheetah MX HC 60MB 315-335 Watt

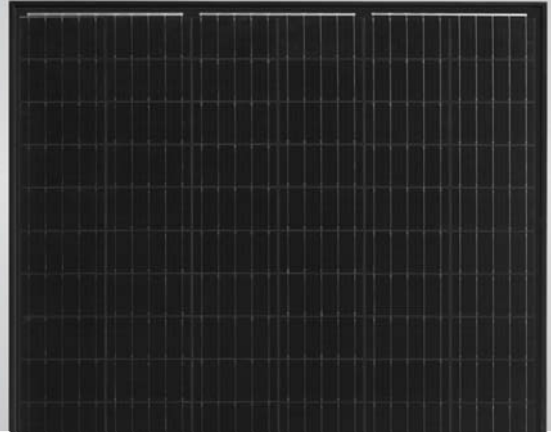
MONO PERC MODULE
Power Optimized

Positive power tolerance of 0~+3%

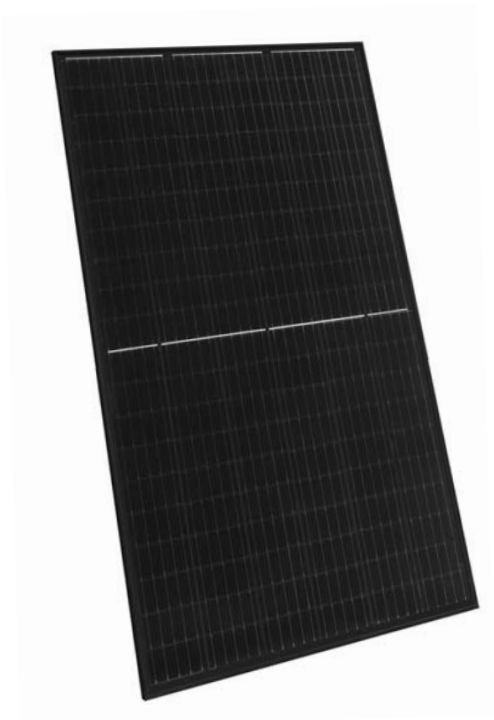
ISO9001:2008, ISO14001:2004, OHSAS18001
certified factory.
IEC61215, IEC61730 certified products.



PERC



KEY FEATURES



Higher Power Output

Decrease in current loss yields higher module efficiency



Voltage Limiting Feature

Allows for longer strings, reduces overall BOS



Shade Tolerance

More Shade tolerance due to twin arrays and cell string MPPT



Built-in Submodule Optimizer

No additional electronics or hardware required; allows for simple installation

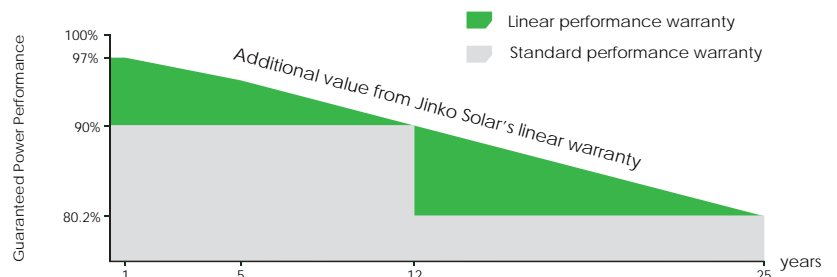


PID Free

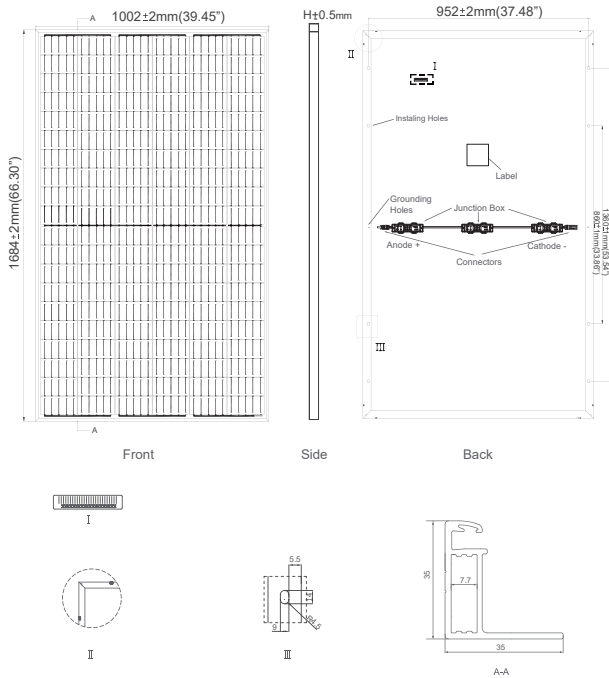
Reinforced cell prevents potential induced degradation

LINEAR PERFORMANCE WARRANTY

10 Year Product Warranty • 25 Year Linear Power Warranty



Engineering Drawings

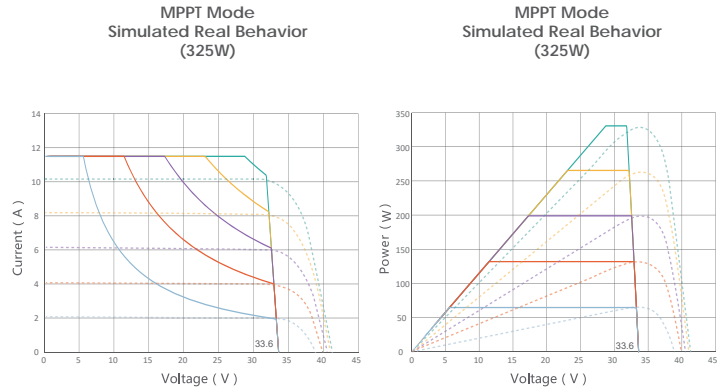


Packaging Configurations

(Two pallets =One stack)

30pcs/pallet, 60pcs/stack, 780pcs/40'HQ Container

Electrical Performance & Temperature Dependence



Mechanical Characteristics

Cell Type	Mono PERC	158.75×158.75mm
No. of Cells	120 (6×20)	
Dimensions	1684×1002×35mm (66.30×39.45×1.38 inch)	
Weight	19.0 kg (41.9 lbs.)	
Front Glass	3.2mm, Anti-reflection Coating, High Transmission, Low Iron, Tempered Glass	
Frame	Anodized Aluminium Alloy (Black)	
Junction Box	IP67 Rated	
Output Cables	TÜV 1x4.0mm ² , (+): 290mm, (-): 145mm or Customized Length	

SPECIFICATIONS

Module Type	JKMS315M-60H-MX3		JKMS320M-60H-MX3		JKMS325M-60H-MX3		JKMS330M-60H-MX3		JKMS335M-60H-MX3	
	STC	NOCT	STC	NOCT	STC	NOCT	STC	NOCT	STC	NOCT
Maximum Power (Pmax)	315Wp	235Wp	320Wp	239Wp	325Wp	242Wp	330Wp	246Wp	335Wp	250Wp
Maximum Power Voltage (Vmp)	33.2V	31.2V	33.4V	31.4V	33.6V	31.6V	33.8V	31.8V	34.0V	32.0V
Maximum Power Current (Imp)	9.49A	7.56A	9.59A	7.62A	9.68A	7.66A	9.77A	7.74A	9.87A	7.82A
Open-circuit Voltage (Voc)	40.7V	37.6V	40.9V	37.8V	41.1V	38.0V	41.3V	38.2V	41.5V	38.4V
Short-circuit Current (Isc)	10.04A	8.33A	10.15A	8.44A	10.20A	8.54A	10.31A	8.65A	10.36A	8.74A
Module Efficiency STC (%)	18.67%		18.96%		19.26%		19.56%		19.85%	
Maximum series fuse rating	20A									
Operating Temperature(°C)	-40°C~+85°C									
Maximum System Voltage	1000VDC (UL and IEC)									
Power Tolerance	0~+3%									
Temperature Coefficients of Pmax	-0.36%/°C									
Temperature Coefficients of Voc	-0.28%/°C for VOC ≤ 33.6V 0.0% C for VOC >33.6V									
Temperature Coefficients of Isc	0.048%/°C									
Nominal Operating Cell Temperature (NOCT)	45±2°C									

* STC: Irradiance 1000W/m² Cell Temperature 25°C AM=1.5

NOCT: Irradiance 800W/m² Ambient Temperature 20°C AM=1.5 Wind Speed 1m/s

* Power measurement tolerance: ± 3%