

IBS60P

KEY FEATURES

10 years
Product
Warranty

25 years
Performance
Warranty



Cell efficiency
up to **19.0 %**



Module efficiency
up to **17.0 %**



Heavy snow load
up to **5,400 Pa**



Wind load
up to **2,400 Pa**



PID Free



ELECTRICAL PARAMETERS

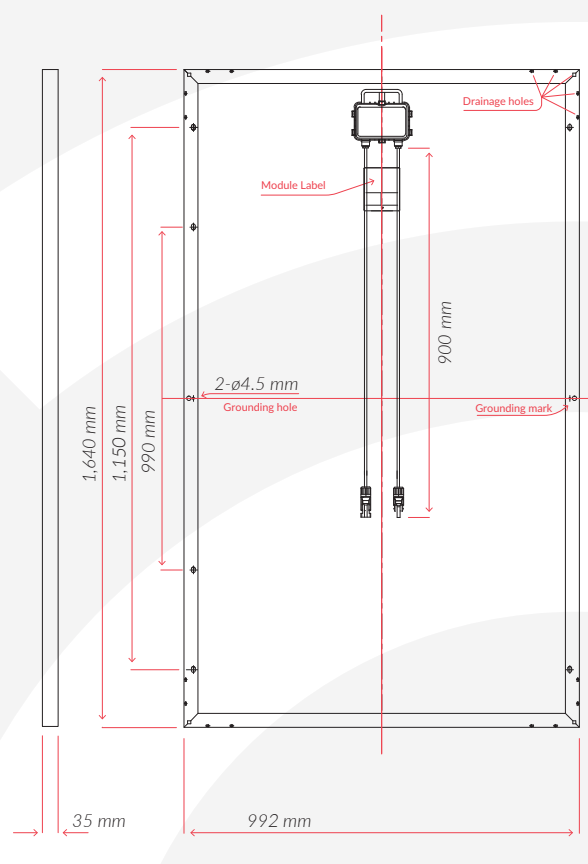
Model	IBS60P				
Maximum Power (Pmax/W)	255	260	265	270	275
Operating Voltage (Vmpp/V)	30.9	31.3	31.7	32.1	32.5
Operating Current (Impp/A)	8.27	8.32	8.37	8.42	8.47
Open-Circuit Voltage (Voc/V)	37.4	37.6	37.8	38.0	38.2
Short-Circuit Current (Isc/A)	8.90	8.97	9.04	9.11	9.18
Module Efficiency η_m (%)	15.7	16.0	16.3	16.6	16.9
Power Tolerance	0+5 Wp				
NOCT	45±2°C				

Values at Standard Test Conditions STC (AM 1.5, Irradiance 1000 W/m², Cell Temperature 25°C)

SPECIFICATIONS

Cell Type	Poly Crystalline
Cells size	156x156 mm
Number of cells	60
Weight	18.5 kg
Front side glass	3,2 mm hardened solar tempered glass
Dimensions	1,640x992x35 mm
Cable length	900 / 1,000 mm available
Cable cross section size	4 mm ²
Number of bypass diodes	3
Connectors	MC4 compatible
Frame	Anodized Aluminium Alloy
Junction Box	IP67

ENGINEERING DRAWINGS



WORKING CONDITIONS

Maximum System Voltage	DC 1,000 V (IEC) / 1,500 V available
Operating temperature	-40°C / +85° C
Maximum reverse current	15 A
IP protection level	IP67
Safety class	II

TEMPERATURE COEFFICIENTS

Power temperature coefficient (Pmax)	-0,41 %/°C
Voltage temperature coefficient (Voc)	-0,34 %/°C
Current temperature coefficient (Isc)	+0,049 %/°C



PACKAGING INFORMATION (I)

Pallet dimension	1,700/1,130/1,130 mm
Pallet weight	580 kg
Modules/pallet	30

PACKAGING INFORMATION (II)

Container	20 HC	40 HC
Pallets per container	12	28
Pieces per container	360	840

PARTNERS